

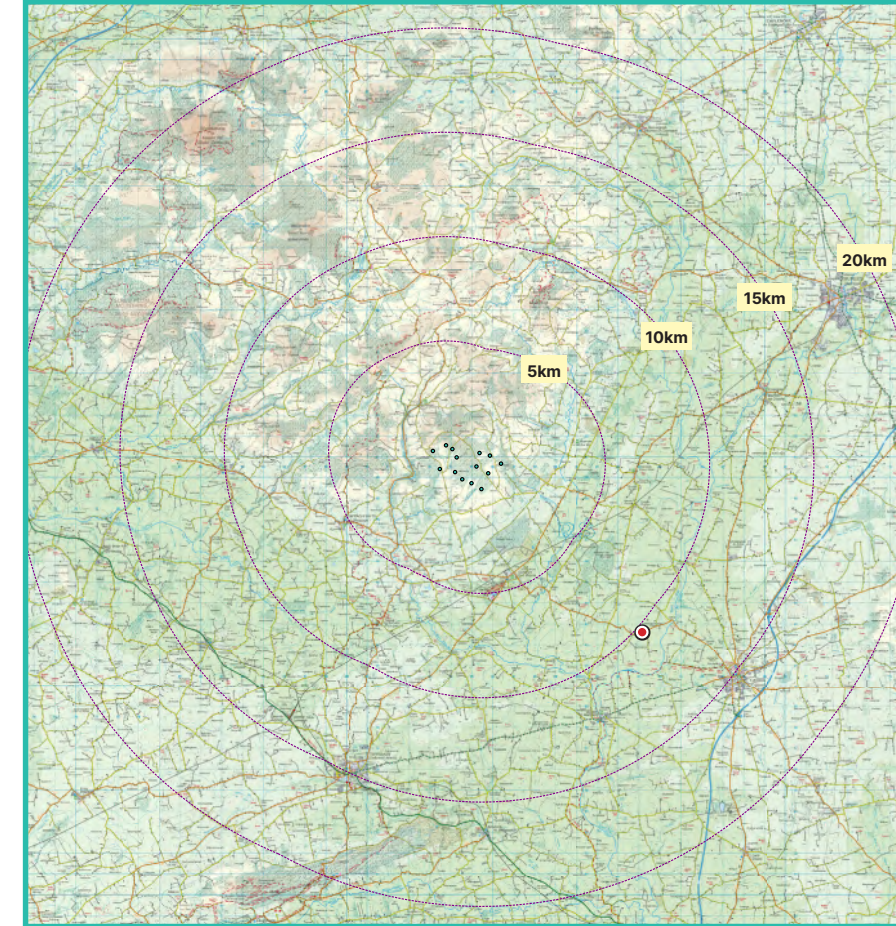
# View Point 11

## SR-33 at Ballynahinch

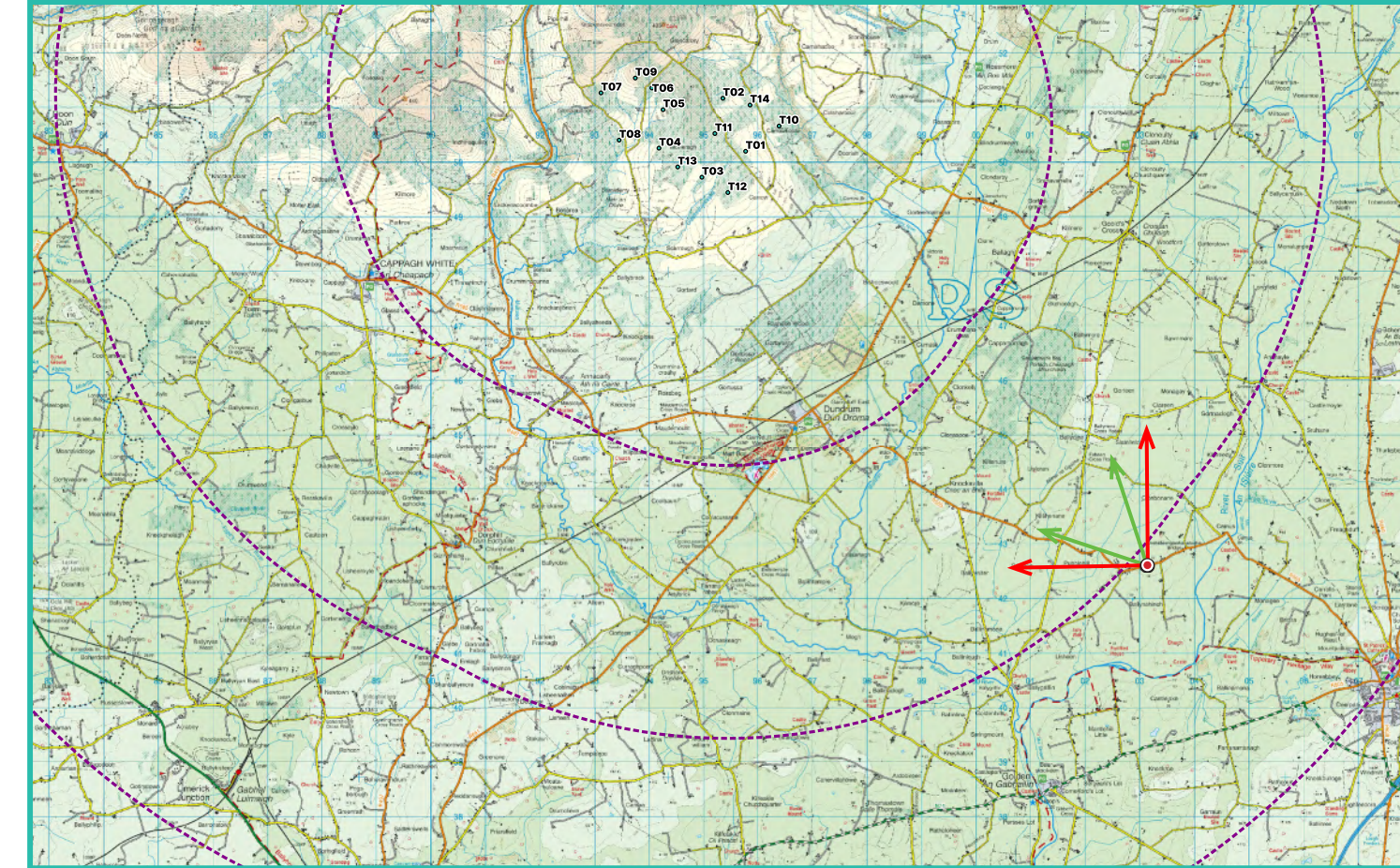
### Photomontage 11

View from Co. Tipperary Scenic Route 33 on the R505 Regional Road in the townland of Ballynahinch. Located approximately 10.3km south-east of the nearest turbine (T12).

|   |   |
|---|---|
| View point grid reference                           | E 603092 N 642644   |
| Date of image taken                                 | 2024-09-11  |
| Time of image taken                                 | 08:55   |
| View point elevation                                | 87m   |
| Angle of Views                                      | 90° / 53.5°   |
| View Direction (Image Centre)                       | 314°  |
| Number of proposed turbines visible in Photomontage | 13/14   |
| Turbine Hub Height                                  | 103.5m  |
| Turbine Rotor Diameter                              | 163m  |
| Turbine Tip Height                                  | 185m  |
| Montage Type  | Type 4 Photomontage / Survey / Scale Verifiable                             |
| Camera & Lens                                       | Canon 5D Mark III / Full Frame Sensor with a 50mm Lens                      |
| Tripod  | Manfrotto 190X extended to approx 1.5m.                                     |
| Map Licence   | © Ordnance Survey Ireland. All rights reserved. Licence number CYAL50267517 |



View point relative to 20km radius.



View point relative to proposed wind farm site.



Detail of view point location.

#### Map Legend

Area shown in 90° view

Area shown in 53.5° view

View Point

Proposed Carrow Wind Farm

#### Wireline Legend

Proposed Carrow Wind Farm

Proposed Met Mast (103.5m)

Existing Wind Farms

Permitted Wind Farms

Proposed Wind Farms

Prepared by  
MKO  
Planning & Environmental Consultants  
Tuam Road, Galway.

Tel: (091) 73 56 11  
E-mail: info@mkofireland.ie  
Website: www.mkofireland.ie



90° View Extent

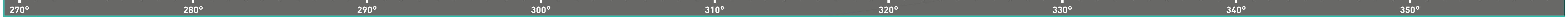
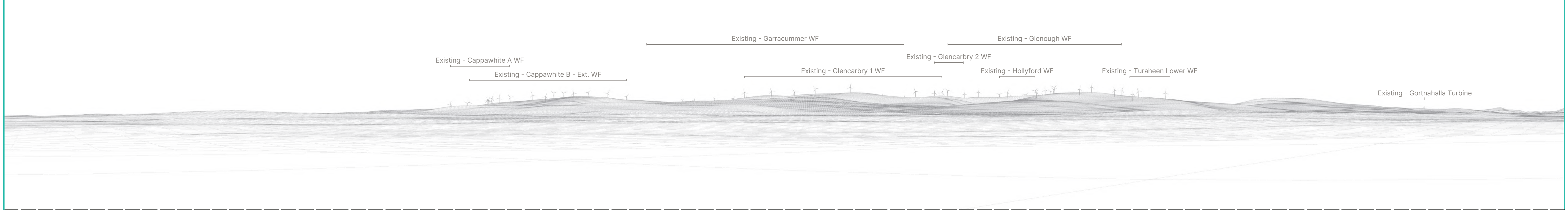
Key Image at 120°



53.5° View Extent



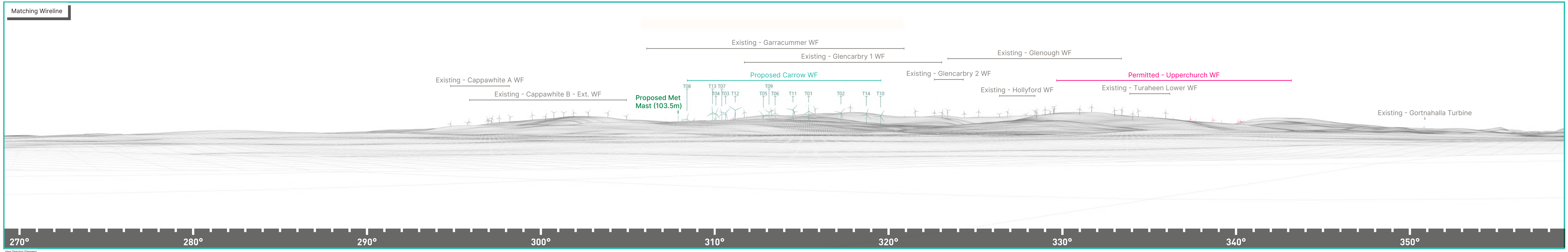
Matching Wireline



Proposed Photomontage with Cumulative at 90°



Matching Wireline



Proposed Photomontage with Cumulative at 53.5°



290°

300°

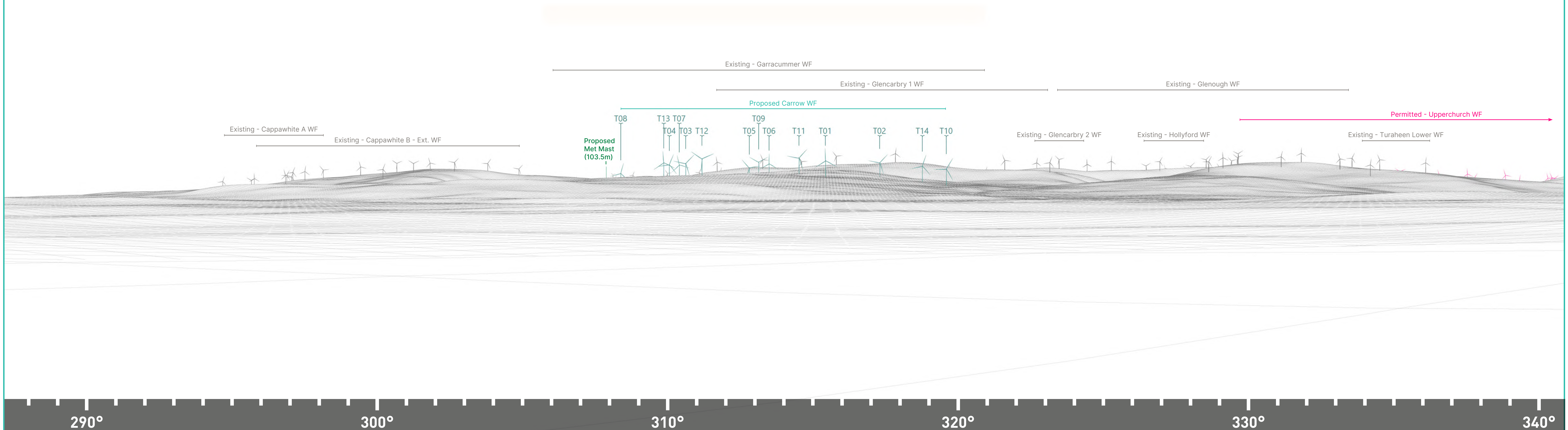
310°

320°

330°

340°

Matching Wireline



290°

300°

310°

320°

330°

340°